

# Technical Data Sheet

## Plycem Exterior Cement Board

### General Information

**Code & product name:** 1323827 MICROCONCRETO RICALIT PARED EXT. 15 MM 1220X2440MM

**Description:** Plycem Exterior Cement Board is a product designed for use in internal and external walls. This product can be coated with basecoat, obtaining wall systems with a monolithic finish and highly resistance to impact and humidity.

### Product components

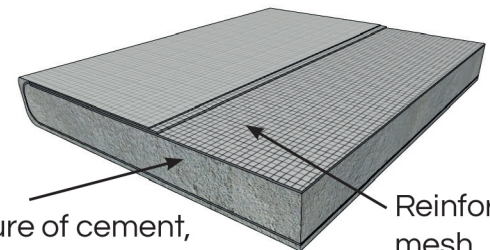
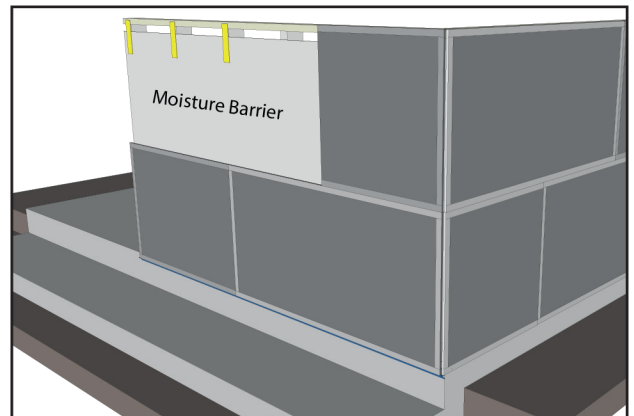
Made with Portland cement, aggregate, lightening compounds and other aggregates.  
This product has reinforcing mesh on both sides of the board.

### Nominal measurements

Description	Size	Tolerance
Thickness	15.0 mm	± 1.5 mm
Useful width	1220 mm	± 6 mm
Length	2440 mm	± 6 mm
Squareness tolerance	2.0 mm	± 1.2 mm
Edge straightness	2.0 mm/m	±1.5mm

### Technical Specifications

Description	Value
Wet flexural strength (MPa)	≥4.0
Equilibrium flexural strength (MPa)	8.70
Density (g/cm3)	1.40
Moisture movement(%)	0.092
Water tightness (Is there dripping on the underside?)	NO
Heat/rain resistance (Does it show cracking, spalling, soft material, wet top side or buckling?)	NO
Wet - dry performance (RL)	0.89
Warm water performance (RL)	1.00



Mixture of cement, aggregates, lightening compounds and other additives.

Reinforcing mesh.

### Other characteristics

Weight (kg)	48
Coverage per unit (m2)	2.97

This product complies with National Technical Regulation RTCR 491:2017 and INTE/ISO 8336:2018

RL: 95% lower confidence estimate of the ratio where the individual ratio as follow:

$ri = ti/ci$

Where:

$ti$ =flexural strength after water immersion

$ci$ =control flexural strength